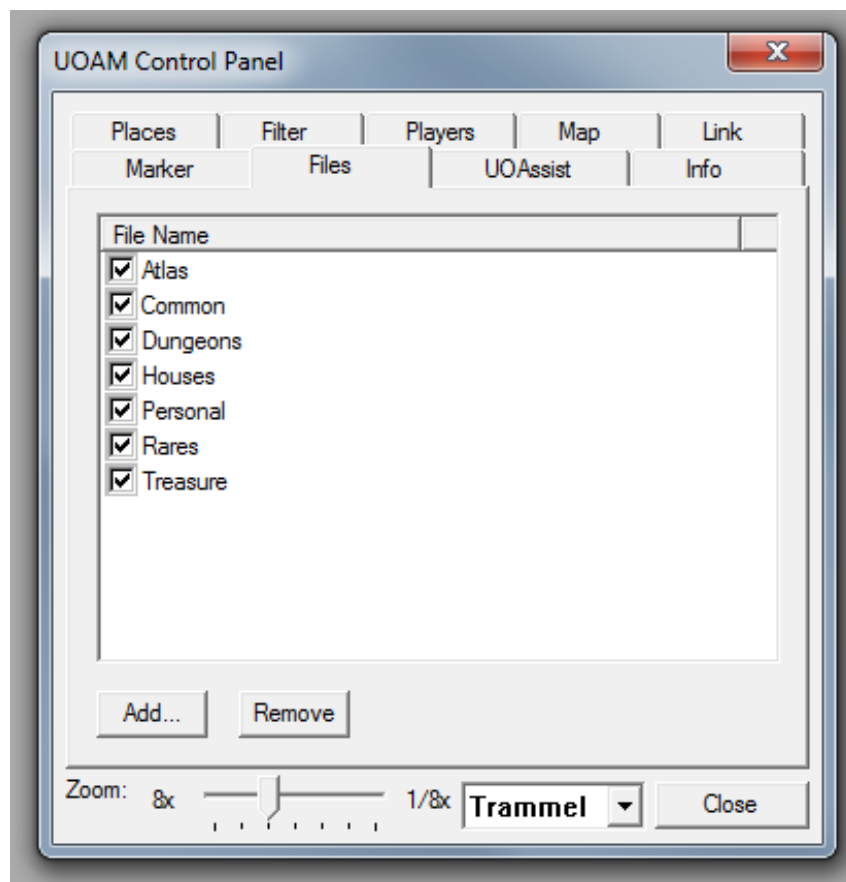


The first thing UOAM will need to do is build the graphics for each facet. You might have to tell it where to find your UO client, especially if you used our pre-patched download.

Within UOAM, go to **Map > UO Client Data Files Location** and tell it where to find your UO program. It will then create the files for each of the facets – Trammel, Felucca, Malas, Tokuno, and Ilshenar.

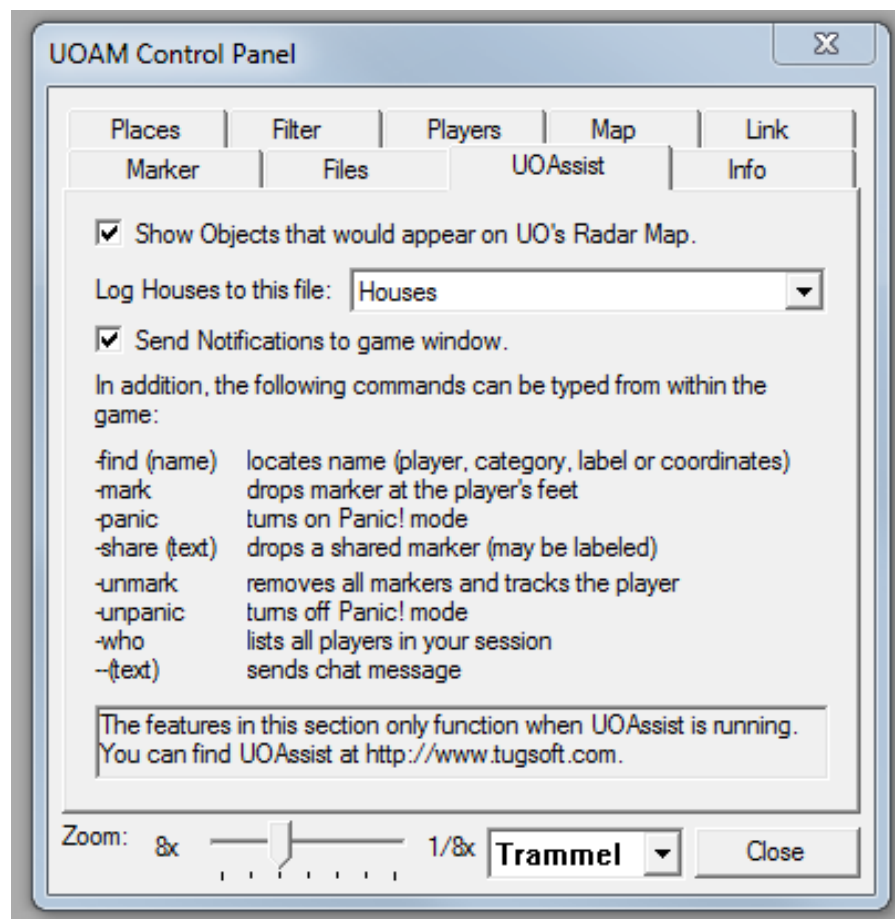
The quickest way to the configuration tabs is to choose **Help > About**. Then choose the **Places** tab.



These files (except Personal) are included in your download. Every treasure map location is marked by the corresponding number in the rune library.

If you want to log the location of players' houses, you'll need to activate that feature

Choose the **UOAssist** tab and select Houses for the file to log to.

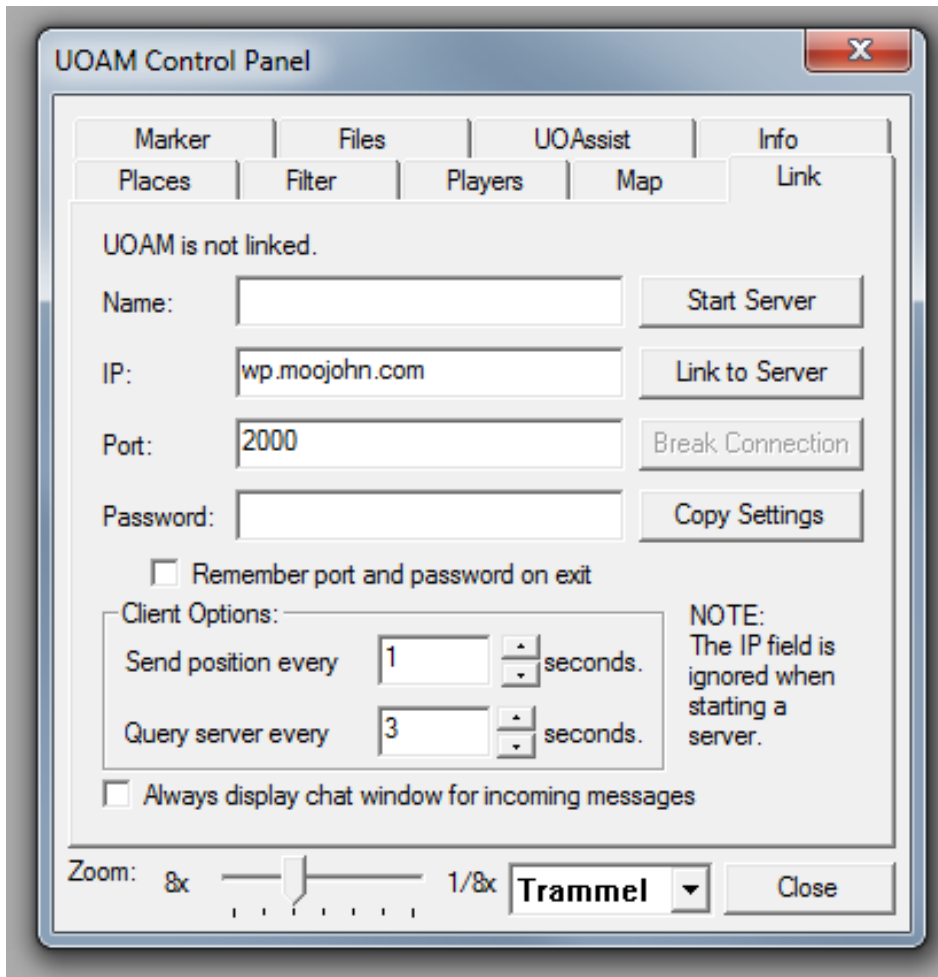


Want to see where your friends are anywhere in the world?

< see next page >

Use the Link mode to keep track of friends when they're online.

Choose the Link tab:



We're running a link server at wp.moojohn.com with no password. Just enter your character's name (this is what others will see on the map), the server address, and click **Link to Server**. Feel free to raise the Send and Query intervals to something more useful; something like every 10-15 seconds is plenty for most situations.